

Instructions for Form 2106

Employee Business Expenses

Section references are to the Internal Revenue Code.

General Instructions

Changes To Note

- The standard mileage rate has been increased to 32½ cents for each mile of business use in 1998.
- Beginning in 1998, you may use the standard mileage rate instead of actual expenses for leased vehicles. The rate must be used for the entire lease period (except for the period, if any, that began before January 1, 1998).
- For tax years beginning after 1997, rural mail carriers generally can deduct as their vehicle expense the amount of their equipment maintenance allowance. For more details, see the line 1 instructions.
- For tax years beginning in 1998, employees subject to Department of Transportation (DOT) hours of service limits are allowed to deduct 55% of their allowable business meal expenses. For more details, see the line 9 instructions.

Purpose of Form

Use Form 2106 if you are an employee deducting expenses for your job. See the flowchart at the bottom of this page to find out if you must file this form.

You may be able to file **Form 2106-EZ**, Unreimbursed Employee Business Expenses, provided you use the standard mileage rate (if claiming vehicle expense) and were not reimbursed by your employer for any expense.

See Form 2106-EZ to find out if you qualify to file it.

Recordkeeping

You cannot deduct expenses for travel (including meals unless you used the standard meal allowance), entertainment, gifts, or use of a car or other listed property, unless you keep records to prove the time, place, business purpose, business relationship (for entertainment and gifts), and amounts of these expenses. Generally, you must also have receipts for all lodging expenses (regardless of the amount) and any other expense of \$75 or more.

Additional Information

For more details about employee business expenses, see:

- **Pub. 463**, Travel, Entertainment, Gift, and Car Expenses.
- **Pub. 529**, Miscellaneous Deductions.
- **Pub. 587**, Business Use of Your Home (Including Use by Day-Care Providers).
- **Pub. 946**, How To Depreciate Property.

reimbursed for your expenses, skip line 7 and complete the rest of Part I.

Step 1—Enter Your Expenses

Line 1. If you were a rural mail carrier, your deduction for vehicle expense is equal to your equipment maintenance allowance. This rule applies to you if you were an employee of the United States Postal Service (USPS) who performed services involving the collection and delivery of mail on a rural route. You also must have received the equipment maintenance allowance under a collective bargaining agreement between the USPS and the National Rural Letter Mail Carriers' Association, paid at a rate that does not exceed the 1991 collective bargaining agreement, adjusted for inflation.

If this rule applies to you, you should complete Form 2106 only if you have expenses to deduct other than vehicle expenses.

Line 2. See the line 15 instructions for the definition of commuting.

Line 3. Enter lodging and transportation expenses connected with overnight travel away from your tax home (defined later). **Do not** include expenses for meals and entertainment. For more details, including limits, see Pub. 463.

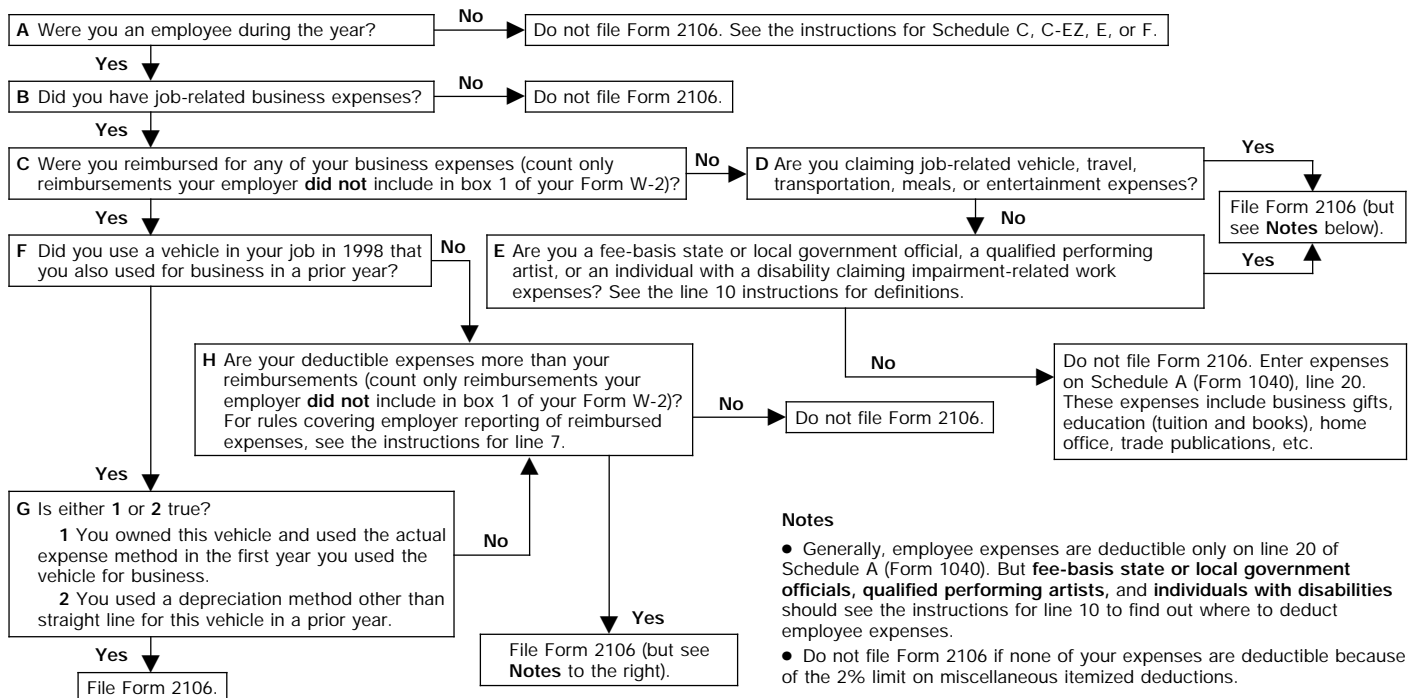
Generally, you cannot deduct any expenses for travel away from your tax home for any period of temporary employment of more than 1 year. However, this rule does not apply for any period in which you were a Federal employee certified by the Attorney General as traveling in temporary duty status for the U.S. government to investigate or prosecute a Federal crime (or to provide support services

Specific Instructions

Part I—Employee Business Expenses and Reimbursements

Fill in **all** of Part I if you were reimbursed for employee business expenses. If you were not

Who Must File Form 2106



Notes

- Generally, employee expenses are deductible only on line 20 of Schedule A (Form 1040). But **fee-basis state or local government officials, qualified performing artists, and individuals with disabilities** should see the instructions for line 10 to find out where to deduct employee expenses.
- Do not file Form 2106 if none of your expenses are deductible because of the 2% limit on miscellaneous itemized deductions.

for the investigation or prosecution of that crime).

Generally, your **tax home** is your main place of business or post of duty regardless of where you maintain your family home. If you do not have a regular or main place of business because of the nature of your work, then your tax home is the place where you regularly live. If you do not fit in either of these categories, you are considered an itinerant and your tax home is wherever you work. As an itinerant, you are not away from home and cannot claim a travel expense deduction. For more details on your tax home, see Pub. 463.

Line 4. Enter other job-related expenses not listed on any other line of this form. Include expenses for business gifts, education (tuition and books), home office, trade publications, etc. For details, including limits, see Pub. 463 and Pub. 529. If you are deducting home office expenses, see Pub. 587 for special instructions on how to report these expenses. If you are deducting depreciation or claiming a section 179 deduction for a cellular telephone or other similar telecommunications equipment, a home computer, etc., see **Form 4562**, Depreciation and Amortization, to figure the depreciation and section 179 deduction to enter on line 4.

Do not include expenses for meals and entertainment, taxes, or interest on line 4. Deductible taxes are entered on lines 5 through 9 of Schedule A (Form 1040). Employees cannot deduct car loan interest.

Note: If line 4 is your only entry, do not complete Form 2106, unless you are claiming:

- Expenses for performing your job as a fee-basis state or local government official,
- Performing-arts-related business expenses as a qualified performing artist, or
- Impairment-related work expenses as an individual with a disability.

See the line 10 instructions for definitions. If you are not required to file Form 2106, enter your expenses directly on Schedule A (Form 1040), line 20.

Line 5. Enter your allowable meals and entertainment expense. Include meals while away from your tax home overnight and other business meals and entertainment. Instead of actual cost, you may be able to claim the **standard meal allowance** for your daily meals and incidental expenses while away from your tax home overnight. Under this method, you deduct a specified amount, depending on where you travel, instead of keeping records of your actual meal expenses. However, you must still keep records to prove the time, place, and business purpose of your travel. See Pub. 463 to figure your deduction using the standard meal allowance.

Step 2—Enter Reimbursements Received From Your Employer for Expenses Listed in STEP 1

Line 7. Enter reimbursements received from your employer (or third party) for expenses shown in Step 1 that were **not** reported to you in box 1 of your Form W-2. This includes reimbursements reported under code "L" in box 13 of Form W-2. Amounts reported under code "L" are certain reimbursements you received for business expenses that were not included as wages on Form W-2 because the expenses were treated as meeting specific IRS substantiation requirements.

Generally, when your employer pays for your expenses, the payments should not be included in box 1 of your Form W-2 if, within a reasonable period of time, you:

- Accounted to your employer for the expenses, **and**
- Were required to return, and did return, any payment not spent (or considered not spent) for business expenses.

If these payments were included in box 1, ask your employer for a corrected Form W-2.

Accounting to your employer means that you gave your employer documentary evidence and an account book, diary, or similar statement to verify the amount, time, place, and business purpose of each expense. You are also treated as having accounted for your expenses if either of the following applies:

- Your employer gave you a fixed travel allowance that is similar in form to the per diem allowance specified by the Federal Government and you verified the time, place, and business purpose of each expense.
- Your employer reimbursed you for vehicle expenses at the standard mileage rate or according to a flat rate or stated schedule, and you verified the date of each trip, mileage, and business purpose of the vehicle use.

See Pub. 463 for more details.

Allocating your reimbursement. If your employer paid you a single amount that covers meals and entertainment as well as other business expenses, you must allocate the reimbursement so that you know how much to enter in Column A and Column B of line 7. Use the following worksheet to figure this allocation.

Worksheet (keep for your records)

- | | |
|---|-------|
| 1. Enter the total amount of reimbursements your employer gave you that were not reported to you in box 1 of Form W-2..... | _____ |
| 2. Enter the total amount of your expenses for the periods covered by this reimbursement..... | _____ |
| 3. Of the amount on line 2, enter your total expense for meals and entertainment | _____ |
| 4. Divide line 3 by line 2. Enter the result as a decimal (rounded to at least three places)..... | _____ |
| 5. Multiply line 1 by line 4. Enter the result here and in Column B, line 7.. | _____ |
| 6. Subtract line 5 from line 1. Enter the result here and in Column A, line 7.. | _____ |

Step 3—Figure Expenses To Deduct on Schedule A (Form 1040)

Line 9. If you were an employee subject to Department of Transportation (DOT) hours of service limits, multiply the amount of your allowable business meals by 55%. To be eligible for the 55% deduction, the meals must have been consumed during, or incident to, a period of duty subject to these limits.

Employees subject to the DOT hours of service limits include certain air transportation employees, such as pilots, crew, dispatchers, mechanics, and control tower operators; interstate truck operators and interstate bus drivers; certain railroad employees, such as engineers, conductors, train crews, dispatchers, and control operations personnel; and certain merchant mariners.

Line 10—Special rules. If you were a **fee-basis state or local government official** (defined below), include the expenses you

incurred for services performed in that job in the total on Form 1040, line 32. Write "FBO" and the amount in the space to the left of line 32 on Form 1040. Your employee business expenses are deductible whether or not you itemize deductions. A fee-basis state or local government official is an official who is an employee of a state or political subdivision of a state and is compensated, in whole or in part, on a fee basis.

If you were a **qualified performing artist** (defined below), include the part of the line 10 amount attributable to performing-arts-related expenses in the total on Form 1040, line 32. Write "QPA" and the amount in the space to the left of line 32 on Form 1040. Your performing-arts-related business expenses are deductible whether or not you itemize deductions.

A qualified performing artist is an individual who:

1. Performed services in the performing arts as an employee for at least two employers during the tax year,
2. Received from at least two of those employers wages of \$200 or more per employer,
3. Had allowable business expenses attributable to the performing arts of more than 10% of gross income from the performing arts, **and**
4. Had adjusted gross income of \$16,000 or less before deducting expenses as a performing artist.

To be treated as a qualified performing artist, a married individual must also file a joint return, unless the individual and his or her spouse lived apart for all of 1998. On a joint return, requirements 1, 2, and 3 must be figured separately for each spouse. However, requirement 4 applies to the combined adjusted gross income of both spouses.

If you were an **individual with a disability** and are claiming impairment-related work expenses (defined below), enter the part of the line 10 amount attributable to those expenses on Schedule A, line 27, instead of on Schedule A, line 20. Your impairment-related work expenses are not subject to the 2% limit that applies to most other employee business expenses.

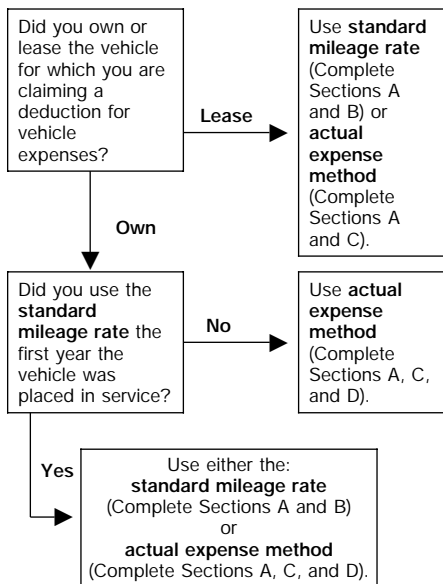
Impairment-related work expenses are the allowable expenses of an individual with physical or mental disabilities for attendant care at his or her place of employment. They also include other expenses in connection with the place of employment that enable the employee to work. See Pub. 463 for more details.

Part II—Vehicle Expenses

There are two methods for computing vehicle expenses—the standard mileage rate and the actual expense method. In some cases, you must use the actual expense method instead of the standard mileage rate. Use the flowchart on page 3 to see which method to use. Rural mail carriers should see the line 1 instructions to figure their vehicle expense, enter that amount on line 1, and complete only Section A in Part II.

If you have the option of using either the standard mileage rate or actual expense method, you should figure your expenses both ways to find the method most beneficial to you. But when completing Form 2106, fill in **only** the sections that apply to the method you choose.

For Vehicles Placed in Service After 1980*



* For vehicles placed in service before 1981, see Rev. Proc. 97-58, 1997-2 C.B. 582.

Section A—General Information

All individuals claiming vehicle expenses must complete Section A.

If you used two vehicles for business during the year, use a separate column in Sections A, C, and D for each vehicle. If you used more than two vehicles, attach a statement using the format in Sections A, C, and D.

Line 11. Date placed in service is generally the date you first start using your vehicle. However, if you first start using your vehicle for personal use and later convert it to business use, the vehicle is treated as placed in service on the date you started using it for business.

Line 12. Enter the total number of miles you drove each vehicle during 1998. But if you converted your vehicle during the year from personal to business use (or vice versa), enter the total miles for only the months you drove the vehicle for business.

Line 13. Do not include commuting miles on this line; commuting miles are not considered business miles. See the line 15 instructions for the definition of **commuting**.

Line 14. Divide line 13 by line 12 to figure your business use percentage. However, if you converted your vehicle during the year from personal to business use (or vice versa), multiply this percentage by the number of months you drove the vehicle for business and divide the result by 12.

Line 15. Enter your average daily round trip commuting distance. If you went to more than one work location, figure the average.

Generally, **commuting** is travel between your home and a work location. However, such travel is not commuting if you meet **any** of the following conditions:

- You have at least one regular work location away from your home and you travel to a temporary work location in the same trade or business, regardless of the distance. A temporary work location is one where you perform services on an irregular or short-term basis (generally a matter of days or weeks).
- You travel to a temporary work location outside the metropolitan area where you live and normally work.
- Your home is your principal place of business under section 280A(c)(1)(A) (for purposes of

deducting expenses for business use of your home) and you travel to another work location in the same trade or business, regardless of whether that location is regular or temporary and regardless of distance.

Line 16. If you do not know the total actual miles you used your vehicle for commuting during the year, figure the amount to enter on line 16 by multiplying the number of days during the year that you used each vehicle for commuting by the average daily round trip commuting distance in miles. However, if you converted your vehicle during the year from personal to business use (or vice versa), enter your commuting miles only for the period you drove your vehicle for business.

Section B—Standard Mileage Rate

You may use the standard mileage rate instead of actual expenses to figure the deductible costs of operating a passenger car, including a van, pickup, or panel truck.

If you want to use the standard mileage rate for a vehicle you own, you must do so in the first year you place your vehicle in service. In later years, you may deduct actual expenses but you may not use a depreciation method other than straight line.

If you lease your vehicle, you may use the standard mileage rate, but you must use the rate for the entire lease period (except for the period, if any, that began before January 1, 1998).

You may also deduct state and local personal property taxes. Enter these taxes on Schedule A (Form 1040), line 7.

If you are claiming the standard mileage rate for mileage driven in more than one business activity, you must figure the deduction for each business on a separate form or schedule (e.g., Form 2106 or Schedule C, C-EZ, E, or F).

Section C—Actual Expenses

Line 23. Enter your total annual expenses for gasoline, oil, repairs, insurance, tires, license plates, or similar items. Do not include state and local personal property taxes or interest expense you paid. Deduct state and local personal property taxes on Schedule A (Form 1040), line 7. Employees cannot deduct car loan interest.

Line 24a. If during the year you rented or leased instead of using your own vehicle, enter the cost of renting. Also, include on this line any temporary rentals, such as when your car was being repaired, except for amounts included on line 3.

Line 24b. If you leased a vehicle for a term of 30 days or more after June 18, 1984, you may have to reduce your deduction for vehicle lease payments by an amount called the **inclusion amount**. You may have to enter the inclusion amount on line 24b if:

The lease term began in:	And the vehicle's fair market value on the first day of the lease exceeded:	
1997 or 1998.....	\$15,800	
1995 or 1996.....	15,500	
1994.....	14,600	

If the lease term began before 1994, see Pub. 463 to find out if you have an inclusion amount and how to figure the inclusion amount. Enter the inclusion amount on line 24b. If you have no inclusion amount, leave line 24b blank.

Line 25. If during 1998 your employer provided a vehicle for your business use and included 100% of its annual lease value in box 1 of your Form W-2, enter this amount on line 25. If less than 100% of the annual lease value was included in box 1 of your Form W-2, skip line 25.

Section D—Depreciation of Vehicles

If you do not own the vehicle, skip Section D.

Depreciation is an amount you can deduct to recover the cost or other basis of your vehicle over a certain number of years. In some cases, you may elect to expense, under section 179, part of the cost of your vehicle in the year of purchase. For more details, see Pub. 463.

Line 30. Enter the vehicle's actual cost (including sales tax) or other basis (unadjusted for prior years' depreciation). If you traded in your vehicle, your basis is the adjusted basis of the old vehicle (figured as if 100% of the vehicle's use had been for business purposes) plus any additional amount you pay for your new vehicle. Reduce your basis by any diesel fuel or qualified electric vehicle credit or deduction for clean-fuel vehicles you claimed.

If you converted the vehicle from personal use to business use, your basis for depreciation is the smaller of the vehicle's adjusted basis or its fair market value on the date of conversion.

Line 31. If 1998 is the first year your vehicle was placed in service and the percentage on line 14 is more than 50%, you may elect to deduct as an expense a portion of the cost (subject to a yearly limit). To calculate this section 179 deduction, multiply the part of the cost of the vehicle that you choose to expense by the percentage on line 14. The total of your depreciation and section 179 deduction generally cannot be more than \$3,160 multiplied by the percentage on line 14. However, the \$3,160 limit is increased for certain clean-fuel and electric vehicles (see the line 36 instructions). Your section 179 deduction for the year cannot be more than the income from your job and any other active trade or business on your Form 1040.

Caution: If you are claiming a section 179 deduction on other property, or you placed more than \$200,000 of section 179 property in service during the year, use Form 4562 to figure your section 179 deduction. Enter the amount of the section 179 deduction allocable to your vehicle (from Form 4562, line 12) on Form 2106, line 31.

Note: For section 179 purposes, the cost of the new vehicle does not include the adjusted basis of the vehicle you traded in.

Example:

Cost including taxes.....	\$15,000
Adjusted basis of trade-in.....	- 2,000
Section 179 basis.....	= \$13,000
Limit on depreciation and section 179 deduction.....	\$ 3,160

Smaller of:

Section 179 basis, or limit on depreciation and section 179 deduction.....	\$ 3,160
Percentage on line 14.....	x .75
Section 179 deduction.....	= \$ 2,370

Line 32. To figure the basis for depreciation, multiply line 30 by the percentage on line 14. From that result, subtract the full amount of any section 179 deduction (and half of any investment credit taken before 1986 unless you took the reduced credit).

Line 33. If you used the standard mileage rate in the first year the vehicle was placed in service and now elect to use the actual expense method, you **must** use the straight line method of depreciation for the vehicle's estimated useful life. Otherwise, use the chart on page 4 to find the depreciation method and percentage to enter on line 33. (For example, if you placed a car in service on December 1, 1998, and you use the method and percentage in column (a), enter "200 DB 5%" on line 33.) To use the chart, first find the date you placed

Depreciation Method and Percentage Chart

Date Placed in Service	(a)	(b)	(c)	(d)
Oct. 1—Dec. 31, 1998	200 DB 5%	150 DB 3.75%	SL 2.5%	
Jan. 1—Sept. 30, 1998	200 DB 20%	150 DB 15%	SL 10%	
Oct. 1—Dec. 31, 1997	200 DB 38%	150 DB 28.88%	SL 20%	
Jan. 1—Sept. 30, 1997	200 DB 32%	150 DB 25.5%	SL 20%	
Oct. 1—Dec. 31, 1996	200 DB 22.8%	150 DB 20.21%	SL 20%	
Jan. 1—Sept. 30, 1996	200 DB 19.2%	150 DB 17.85%	SL 20%	
Oct. 1—Dec. 31, 1995	200 DB 13.68%	150 DB 16.4%	SL 20%	
Jan. 1—Sept. 30, 1995	200 DB 11.52%	150 DB 16.66%	SL 20%	
Oct. 1—Dec. 31, 1994	200 DB 10.94%	150 DB 16.41%	SL 20%	
Jan. 1—Sept. 30, 1994	200 DB 11.52%	150 DB 16.66%	SL 20%	
Oct. 1—Dec. 31, 1993	200 DB 9.58%	150 DB 14.35%	SL 17.5%	
Jan. 1—Sept. 30, 1993	200 DB 5.76%	150 DB 8.33%	SL 10%	
Jan. 1, 1987—Dec. 31, 1992	MACRS*	MACRS*	SL*	
Jan. 1—Dec. 31, 1986	ACRS*		SL*	SL 4.167%
June 19, 1984—Dec. 31, 1985	ACRS*		SL*	SL*

*Enter your unrecovered basis, if any, on line 34. See Pub. 463 for more information.

the vehicle in service (line 11). Then, select the depreciation method and percentage from column (a), (b), (c), or (d). For vehicles placed in service before 1998, use the same method you used on last year's return unless a decline in your business use requires a change to the straight line method. For vehicles placed in service during 1998, select the depreciation method and percentage after reading the explanation for each column.

Column (a). You may use column (a) only if the business use percentage on line 14 is more than 50%. The method in this column, the 200% declining balance method, will give you the largest deduction in the year your vehicle is placed in service. This column is also used for vehicles placed in service before 1987 and depreciated under the accelerated cost recovery system (ACRS).

Column (b). You may use column (b) only if the business use percentage on line 14 is more than 50%. The method in this column, the 150% declining balance method, will give you a smaller depreciation deduction than in column (a) for the first 3 years. However, you will not have a "depreciation adjustment" on this item for alternative minimum tax purposes. This may result in a smaller tax liability if you must file **Form 6251**, Alternative Minimum Tax—Individuals.

Column (c). You must use column (c), or column (d) if applicable, if the business use percentage on line 14 is 50% or less. The method in this column is the straight line method over 5 years. It is optional if the business use percentage on line 14 is more than 50%.

Note: If your vehicle was used more than 50% for business in the year it was placed in service and used 50% or less in a later year, part of the depreciation and section 179 deduction previously claimed may have to be added back to your income in the later year. Figure the amount to be included in income on **Form 4797**, Sales of Business Property.

Column (d). You must use column (d) if you placed your vehicle in service before 1987 and you elected the straight line method over a recovery period of 12 years.

Caution: If you placed other business property in service during the year you placed your vehicle in service (for any year after 1986), or you used your vehicle mainly within an Indian reservation, you may not be able to use the chart. See Pub. 946 to figure your depreciation.

Line 34. If during the year you did not sell or exchange your vehicle (or you sold or exchanged your vehicle that was placed in service after 1986 and before 1993), multiply line 32 by the percentage on line 33. If during the year you sold or exchanged your vehicle that was placed in service:

- Before 1987, enter -0- on line 34 for that vehicle.
- After 1992, multiply the result for line 34 by 50%, and enter on line 34. However, do not multiply by 50% if you originally placed the vehicle in service during the last 3 months of a year after 1992. Instead, multiply the result for line 34 by the percentage shown below for the month you disposed of the vehicle:

Month	Percentage
Jan., Feb., March.....	12.5%
April, May, June.....	37.5%
July, Aug., Sept.....	62.5%
Oct., Nov., Dec.....	87.5%

Line 36. Using the chart below, find the date you placed your vehicle in service. Then, enter on line 36 the corresponding amount from the **Limit** column.

Date Vehicle Was Placed in Service	Limit
Jan. 1—Dec. 31, 1998.....	\$3,160*
Jan. 1—Dec. 31, 1997.....	5,000*
Jan. 1—Dec. 31, 1996.....	2,950
Jan. 1—Dec. 31, 1995.....	1,775
Jan. 1, 1993—Dec. 31, 1994.....	1,675
Jan. 1, 1991—Dec. 31, 1992.....	1,575
Jan. 1, 1987—Dec. 31, 1990.....	1,475
Apr. 3, 1985—Dec. 31, 1986.....	4,800
Jan. 1—Apr. 2, 1985.....	6,200
June 19—Dec. 31, 1984.....	6,000

- * For vehicles placed in service after August 5, 1997:
- These limits do not apply to the cost of any qualified clean-fuel vehicle property (such as retrofit parts and components) installed on a vehicle for the purpose of permitting that vehicle to run on a clean-burning fuel. See section 179A for definitions.
 - The limit for vehicles produced by an original equipment manufacturer and designed to run primarily on electricity is (a) \$9,380 for vehicles placed in service in 1998 and (b) \$15,100 for vehicles placed in service in 1997.

Paperwork Reduction Act Notice. We ask for the information on this form to carry out the Internal Revenue laws of the United States. You are required to give us the information. We need it to ensure that you are complying with these laws and to allow us to figure and collect the right amount of tax.

You are not required to provide the information requested on a form that is subject to the Paperwork Reduction Act unless the form displays a valid OMB control number. Books or records relating to a form or its instructions must be retained as long as their contents may become material in the administration of any Internal Revenue law. Generally, tax returns and return information are confidential, as required by section 6103.

The time needed to complete and file this form will vary depending on individual circumstances. The estimated average time is:

Recordkeeping.....	1 hr., 38 min.
Learning about the law or the form ..	20 min.
Preparing the form.....	1 hr., 13 min.
Copying, assembling, and sending the form to the IRS.....	41 min.

If you have comments concerning the accuracy of these time estimates or suggestions for making this form simpler, we would be happy to hear from you. See the Instructions for Form 1040.